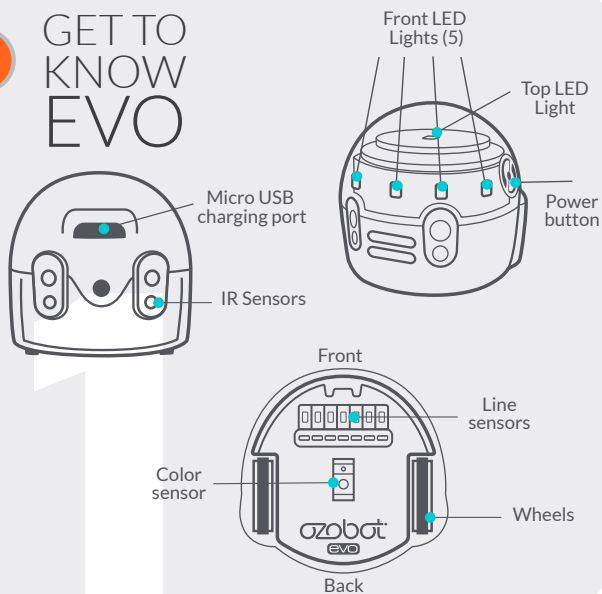


evo GUIDE

1

GET TO KNOW EVO



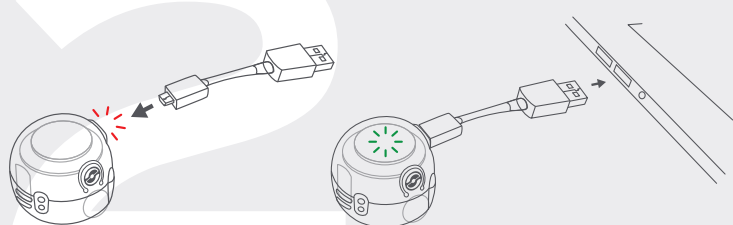
2

CHARGE

Evo comes partially charged. Get a full charge for maximum use.

1. Plug the USB Cable into Evo's Micro USB Port.
2. Plug the other end of the USB Cable into any USB port or power adapter.
3. Evo's lights turn solid green when fully charged.

When a red light flashes on Evo's back side, the battery is low and it is time to charge again.

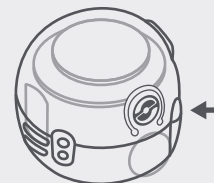


3

POWER ON/OFF

Press and quickly release Evo's power button to turn on. Evo will light up and wait for instruction. If Evo begins interacting with you, it may not be in Classroom Mode. See Step 7 for instructions on enabling Classroom Mode.

Press and quickly release the power button again to turn off.

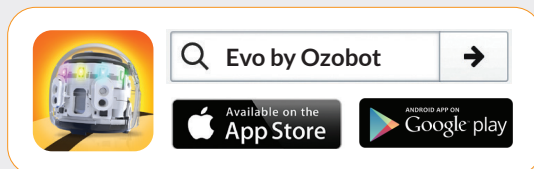


4

NAME EVO

Naming your Evos can help you keep track of multiple bots. Evo's name will show up on a device when it is connected via Bluetooth™ to the Evo App or the multi-bot EDU Utility Updater.

1. Make sure you have the most recent version of the Ozobot Evo companion app installed (v.1.1.89 or newer on both iOS and Android).



2. Enable Bluetooth™ on your device and make sure Ozobot is turned on (if you have multiple Evos, make sure the ones you are not naming are powered off).
3. From the home page of the Evo Companion app, your bot will show up in "Nearby Evo" at the bottom of the screen.
4. Tap on the Evo you wish to name and select "Connect."
5. Select "Ownership" and input your desired name into the text bar. Select "OK" to finalize.

5 CALIBRATE EVO ON PAPER

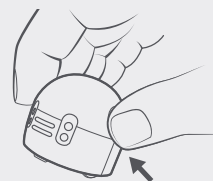
For proper functioning, Evo's sensors need to be calibrated before each use or after changing the playing surface or lighting conditions. To let Evo know what its surroundings are and enable it to properly follow lines and read codes, you must calibrate.

1.



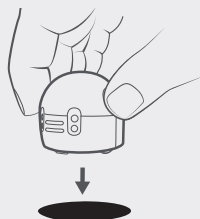
Draw a black circle slightly bigger than Evo (approx. 1.25 in or 35mm).

2.



Hold down the power button on Evo for 2 seconds until the LED light flashes white.

3.



Release the button. Wheels will rotate once. Quickly place Evo in the middle of the black calibration dot and let go.




4.



Evo will spin, move forward, and flash green, which means it has successfully calibrated. Start over if Evo flashes red.

6 LOAD PROGRAMS

To upload OzoBlockly programs from the editor (ozoblockly.com/editor) to Evo, follow these steps for flash loading:

1. Make sure Evo's firmware is updated to version 1.4 or newer.
2. Using the toggle on the top left, ensure the OzoBlockly editor is in "Evo Mode."  
3. From the OzoBlockly Editor page, click "Flashing"  in the lower left corner of the screen and follow the on-screen instructions to calibrate and load.
4. For troubleshooting, click "Help" in the pop-up screen.

App-enabled uploads are not recommended for Classroom Mode Evos. For more information on OzoBlockly, access the OzoBlockly Getting Started Guide at <http://files.ozobot.com/stem-education/ozoblockly-getting-started.pdf>.

7 CLASSROOM MODE

Classroom Kit Evos have Classroom Mode automatically enabled. Classroom Mode turns off the social aspects of Evo more suitable for activities outside school, like chattiness and animations (called "tricks"). To turn Classroom Mode on/off:

1. Make sure a recent version of the Ozobot Evo app is installed on your device (v.1.5 or newer on both iOS and Android).
2. Open the app. From the Home screen, connect to your Evo. When your Evo is connected, the robot's icon appears with a turquoise glow.
3. Once connected, tap the Evo icon and select "More Info."
4. The popup allows you to turn Classroom Mode on or off. It also allows you to mute all sounds and adjust the brightness of Evo's LEDs. Click "Apply" to finalize changes.

8 FIRMWARE UPDATES

Evos are updated to the latest firmware before being packed in Classroom Kits. Check for updates periodically to take advantage of bug fixes and new features. To update your Evos' firmware:

1. Go to the App Store to download and open the free Edu Updater Utility for iOS or Android.
2. Make sure Evos are fully charged.
3. Power on up to 6 Evos (make sure all other Evos are powered off and not charging.)
4. Select "Scan" on app.
5. The app will find and update Evos one at a time. Evos will move from the "Queued" to "Updated" section on your app. It should take approximately 5 minutes for a batch of 6 Evos to update.
6. Repeat updating 6 Evos at a time, until all Evos are updated. Be sure to turn off the Evos you have completed updating before updating the next set.