

Toniebox Adventure Bundle

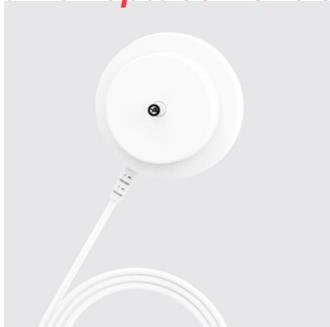
Includes (12) pieces

Total Kit Replacement Cost: \$280



Purple Toniebox

Replacement Cost: \$100



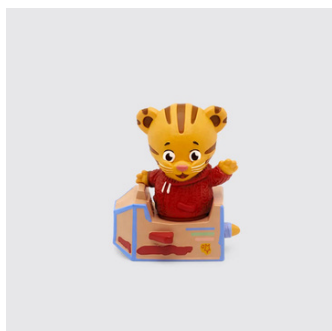
Charger

Replacement Cost: \$15

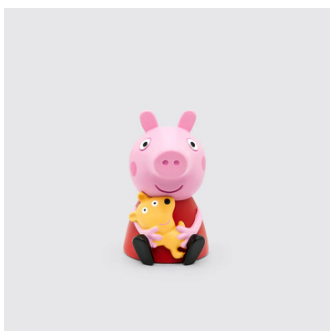


Yeti Character Bag

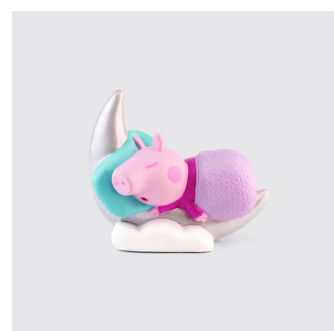
Replacement Cost: \$25



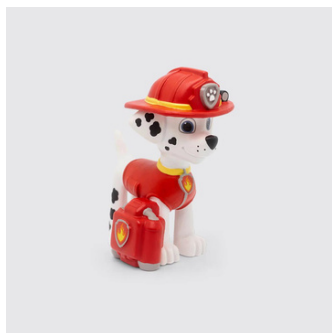
Daniel Tiger



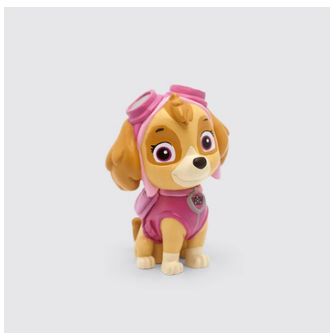
Peppa Pig



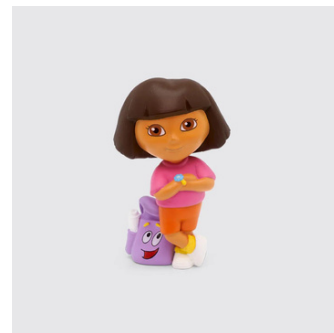
Peppa's Bedtime Stories



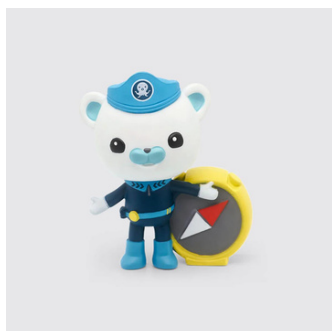
Paw Patrol Marshall



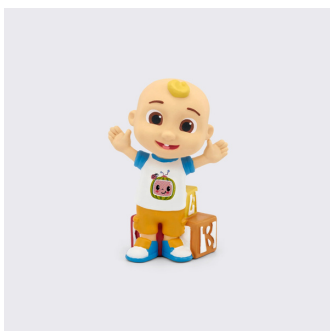
Paw Patrol Skye



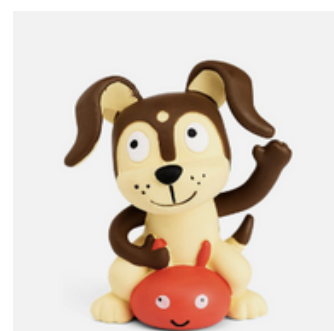
Dora the Explorer



Octonauts Cpt. Barnacles



CoComelon



Playtime Puppy

Replacement costs are non-refundable

Tonie Figure Replacement: \$18/each

Laminated Sheet Replacement: \$2

Borrowing

- "Things" can only be borrowed from the Milpitas Library Accounts Desk
- Each library card can only check out one item at a time
- You need a full-use Santa Clara County Library card with a verified current address to borrow "Things"
- Borrowers must be 18 years or older
- "Things" are no holds, no renewals

Return & Condition

- "Things" must be returned to the Milpitas Library Accounts Desk and may not be placed in library bookdrops
- Make sure to return with all parts intact and that the item is clean and functional

Responsibility and Liability

- The borrower is fully responsible for the item and will be billed for loss or damage due to neglect or abuse
- It is the borrowers responsibility to protect against loss
- The Santa Clara County Library District is not responsible for any data loss while using this equipment

Proper Use and Handling

- The library does not provide supervision or instruction for use of items
- Handle with care, as you would with any other library material
- Culinary items should be returned fully cleaned and ready for use. Items may be returned to patrons to be cleaned if they are returned in unacceptable condition

Toniebox Guides and Manuals



Setup Guide



Safety Manual



Charging Station
Manual



Beginners
Guide

This Toniebox has been set up on a library account and is ready to use. Please do not reset the Toniebox or attempt to connect it to a personal wifi network.

Guides can also be found at: <https://us.tonies.com/pages/manuals>